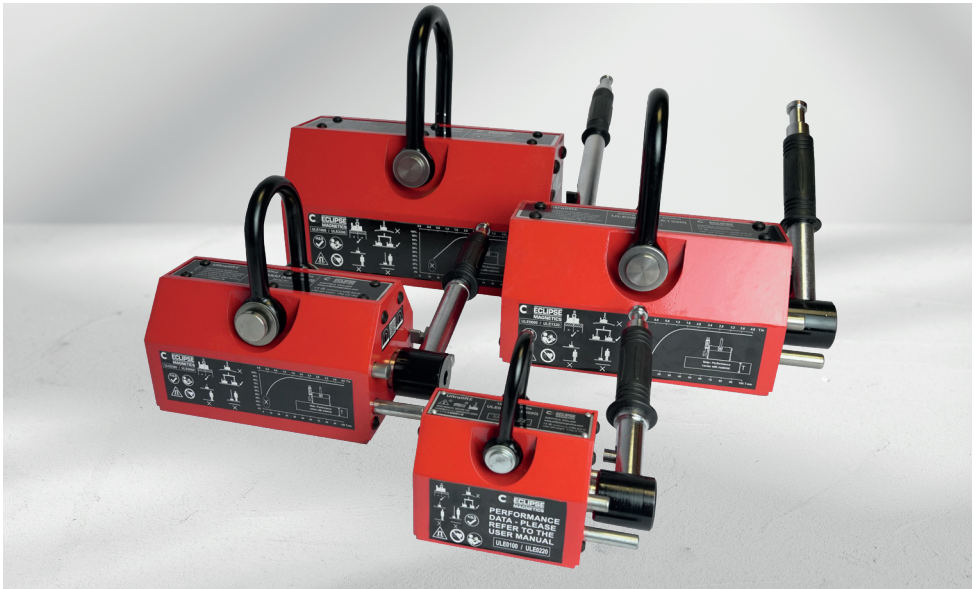




Ultralift E

Instruction Manual



Scan QR code to download full
Multi-language Instruction Manual



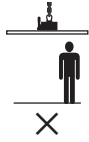
Safety & Usage



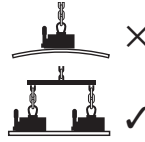
Correct orientation of load



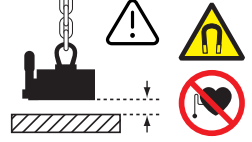
Do not lift people



Do not lift load over people



Do not lift loads exceeding the recommended length

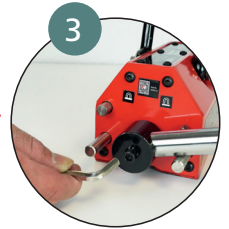
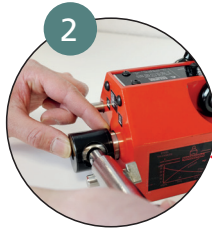


Air gap warning

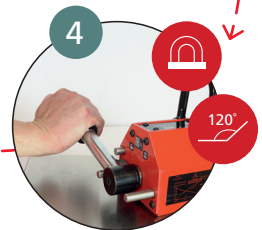
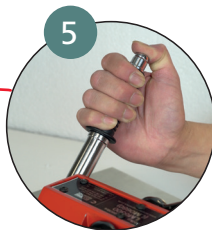
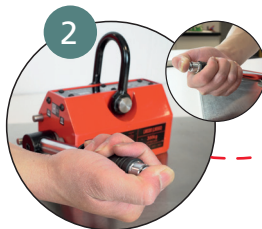
Assembly



Before use, attach the handle to the lifter body.



How to use





DECLARATION OF CONFORMITY

The Supply of Machinery (Safety) Regulations 2008, Annex II, A



Manufacturer: Eclipse Magnetics Ltd

Address: Atlas Way, Sheffield, S4 7QQ, United Kingdom

This declaration is issued under the sole responsibility of the manufacturer.

Product: Ultralift (UL)

Description: A permanent lifting magnet

This machinery fulfils all the relevant provisions of The Supply of Machinery (Safety) Regulations 2008, as well as:

The Electrical Equipment (Safety) Regulations 2016

The Electromagnetic Compatibility Regulations 2016

Designated standards: EN ISO 12100:2010, EN 13854:2019, EN 13155:2020.

The specific technical documentation, in accordance with Appendix VII A, has been written and is available. The documentation will be transmitted to a reasoned request by national authorities.

Sheffield, 21.03.2022

Andrew Reeve Operations Director



DECLARATION OF CONFORMITY

Machinery Directive 2006/42/EC, Annex II, A



Manufacturer: Eclipse Magnetics Ltd

Address: Atlas Way, Sheffield, S4 7QQ, United Kingdom

The person authorised to compile the relevant technical documentation:

Name: Mme Pascale Pekala

Address: Spear and Jackson, 9 Boulevard des Echarneaux, 42400 Saint-Chamond, France

This declaration is issued under the sole responsibility of the manufacturer.

Product: Ultralift (UL)

Description: A permanent lifting magnet

This machinery fulfils all the relevant provisions of the Machinery Directive 2006/42/EC, as well as:

Low Voltage Directive 2014/35/EU

Electromagnetic Compatibility Directive 2014/30/EU

Harmonised standards: EN ISO 12100:2010, EN 13854:2019, EN 13155:2020.

The specific technical documentation, in accordance with Appendix VII A, has been written and is available. The documentation will be transmitted to a reasoned request by national authorities.

Sheffield, 21.03.2022

Andrew Reeve Operations Director

Technical Data



Product Number NA	Product Number UK	Self Weight		Flat Section						Round Section			
				WLL		Thickness Min		Length Max'		WLL		Diameter Max	
		(lbs)	(kg)	(lbs)	(kg)	(in)	(mm)	(in)	(mm)	(lbs)	(kg)	(in)	(mm)
ULE0220	ULE0100	6.7	3	220	100	0.6	15	39.3	1000	110	50	3.1	80
ULE0660	ULE0300	22.1	10	660	300	0.8	20	59.0	1500	330	150	3.9	100
ULE1320	ULE0600	50.7	23	1320	600	1.2	30	78.7	2000	660	300	5.5	140
ULE2200	ULE1000	86.0	39	2200	1000	1.6	40	98.4	2500	1100	500	7.0	180
ULE4400	ULE2000	163.1	74	4400	2000	2.0	50	118.1	3000	1980	900	11.8	300

WLL = Working Load Limit

* The maximum flat section length may need to be shorter for wider loads (Always work within stated WLL)

This chart is to assist but please note that WLL is reduced when lifting certain metals. Always work within the WLL. It is your responsibility to ensure a safe lift is possible. Performance varies with material type - its properties could downrate the WLL. Check the magnetic permeability before lifting. For example: -ferrous alloy steels typically around 80% performance, high carbon steels typically around 70% performance, cast iron typically around 55% performance. Any air gap reduces the WLL (includes paint layers, plastic coating layers, oil film, etc) - the greater the gap the lower the WLL value will be. Holes and perforations reduces surface contact which reduces the WLL. Poorer surface finishes will reduce the WLL. Materials with higher density will weigh more so the size of part to lift will have to reduce. For wider loads, loads that bend/flex and heavier loads you will need to combine additional lifters and spreader beams to achieve a safe lift while working within the WLL. Performance can vary from application. Perform a small lift first!

Warranty & Inspect Annually



Don't forget to register your purchase for the 1 year warranty at sales@eclipsetoolsinc.com



Eclipse Tools North America
 442 Millen Road Unit 9, Stony Creek, ON L8E 6H2
 T 1-800-260-2124
sales@eclipsetoolsinc.com | www.eclipsemagnetics.com/en-us